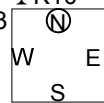


17 ♠A9864

♥K84
♦974
♣K10

♠QJ103
♥AJ6
♦AJ8
♣Q86



♠K75
♥1093
♦KQ2
♣A542

♠2
♥Q752
♦10653
♣J973

Board (17) Av: NS=-380

N-S	E-W	Contract	L	N-S	E-W	IMP
1	9	3NT	W 3 S6		400	-1
9	1	1NT	S-4 SQ		200	5
2	3	3NT	E 3 D6		400	-1
3	2	3NT	W 3 S4		400	-1
4	8	3NT	E 3 H3		400	-1
8	4	3NT	W 3 H2		400	-1
5	12	3NT	W 4 S6		430	-2
12	5	3NT	E 3 C3		400	-1
6	11	3NT	E 3 H2		400	-1
11	6	1NxxS-3	SJ	1000		-12
7	10	3NT	W-1 S6	50		10
10	7	3NT	E 3 H5		400	-1

18 ♠9865

♥KJ3
♦AJ109
♣KJ64



♠A10742
♥109
♦KQ53
♣95

Board (18) Av: NS=+40

N-S	E-W	Contract	L	N-S	E-W	IMP
1	9	3NT	E-3 S4		150	3
9	1	3NT	W 4 H5		430	-10
2	3	3NT	W 3 H5		400	-10
3	2	3NT	W-2 S9	100		2
4	8	3NT	E-2 H3	100		2
8	4	3NT	W-2 S8	100		2
5	12	4H	E-1 C9	50		0
12	5	3NT	W-2 S8	100		2
6	11	3NT	E-2 S4	100		2
11	6	5D	W-1 S9	50		0
7	10	3NT	E-3 S4	150		3
10	7	3NT	W-1 S6	50		0

19 ♠A104

♥953
♦J98
♣Q73



♠Q2
♥75
♦J10975
♣AK98

Board (19) Av: NS=-100

N-S	E-W	Contract	L	N-S	E-W	IMP
1	9	2S	E 3 DJ		140	-1
9	1	3NTxw-2	C4	500		12
2	3	2S	E 2 DJ		110	0
3	2	2S	E 2 DJ		110	0
4	8	2H	N-1 H3		50	2
8	4	2S	W 3 H8		140	-1
5	12	2S	E 3 CA		140	-1
12	5	2S	E 3 CA		140	-1
6	11	2S	E 3 CK		140	-1
11	6	3S	E-1 DJ	100		5
7	10	2S	E 3 H7		140	-1
10	7	2H	N-2 S6		100	0

20 ♠K

♥842
♦10942
♣Q6543



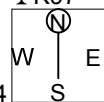
♠QJ953
♥K9
♦QJ63
♣98

Board (20) Av: NS=-660

N-S	E-W	Contract	L	N-S	E-W	IMP
1	9	4H	E 5 SQ		650	0
9	1	3NT	W 5 C4		660	0
2	3	3NT	W 3 DT		600	2
3	2	4H	E 5 D3		650	0
4	8	4H	E 6 H3		680	-1
8	4	3NT	W 4 SK		630	1
5	12	4H	E 6 SQ		680	-1
12	5	4H	E 5 SQ		650	0
6	11	3NT	W 6 C5		690	-1
11	6	4H	E 5 S3		650	0
7	10	4H	E 6 DQ		680	-1
10	7	4H	W 5 SK		650	0

21 ♠9642

♥AQ10
♦J4
♣QJ1064



♠J85
♥97543
♦763
♣53

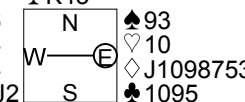
♠KQ3
♥J82
♦AKQ9
♣A82

Board (21) Av: NS=-100

N-S	E-W	Contract	L	N-S	E-W	IMP
1	9	2S	N 2 C5	110		5
9	1	3NT	S-1 CQ		100	0
2	3	2H	W-2 C7	100		5
3	2	4D	N-1 C5		100	0
4	8	3NT	N-2 H3		200	-3
8	4	3NT	S-1 CQ		100	0
5	12	3NT	S-2 CQ		200	-3
12	5	3NT	S-1 CQ		100	0
6	11	3NT	S-1 CQ		100	0
11	6	3NT	S-2 CQ		200	-3
7	10	3NT	S-1 CQ		100	0
10	7	3NT	S-1 CQ		100	0

22 ♠QJ754

♥K86
♦A64
♣AQJ2



♠A102
♥AQJ97
♦KQ
♣876

Board (22) Av: NS=0

N-S	E-W	Contract	L	N-S	E-W	IMP
1	9	5Dx	E-2 HA		500	11
9	1	4Hx	S-1 H4		100	-3
2	3	4H	S-1 H8		50	-2
3	2	3H	S 3 H4	140		4
4	8	4H	N-1 H3		50	-2
8	4	2H	S 3 H2	140		4
5	12	4H	S-1 H4		50	-2
12	5	4H	S-1 DA		50	-2
6	11	4H	S-1 H4		50	-2
11	6	4H	S-1 H3		50	-2
7	10	2S	S 3 S6	140		4
10	7	3D	E 3 HA		110	-3

23 ♠Q96

♥J3
♦10753
♣4



♠AK8542
♥84
♦K106
♣AK

Board (23) Av: NS=+690

N-S	E-W	Contract	L	N-S	E-W	IMP
1	9	4Sx	S 7 C4	1390		12
9	1	4S	S 7 C4	710		1
2	3	4S	S 7 C4	710		1
3	2	4S	S 4 C4	620		-2
4	8	4S	N 7 H3	710		1
8	4	5C	S 6 H7	620		-2
5	12	4S	S 7 C4	710		1
12	5	4S	S 7 C4	710		1
6	11	5C	S 5 H2	600		-3
11	6	4S	S 7 C7	710		1
7	10	4S	S 7 C7	710		1
10	7	4S	S 7 C6	710		1

24 ♠J

♥1084
♦AKJ10752
♣72



♠AK4
♥632
♦98643
♣54

Board (24) Av: NS=+450

N-S	E-W	Contract	L	N-S	E-W	IMP
1	9	3Dx	N 4 S5	570		3
9	1	2Dx	N 4 S5	380		-2
2	3	3Dx	N 4 H5	570		3
3	2	3D	N 4 S5	130		-8
4	8	2D	N 4 H3	130		-8
8	4	3Dx	N 3 S6	470		1
5	12	3Dx	N 3 S5	470		1
12	5	2D	W-5 DA	250		-5
6	11	3Dx	N 4 C2	570		3
11	6	3Dx	N 3 S5	470		1
7	10	3Dx	N 4 S5	570		3
10	7	3Dx	N 4 S6	570		3

25 ♠KQ10654
♥K76
♦A74
♣7

♠AJ98
♥A
♦KQ32
♣QJ52

W E
S

♠732
♥QJ1095
♦98
♣K108

♠8432
♥J1065
♦A9643

26 ♠QJ864
♥7543
♦2
♣AJ4

♠7
♥AJ8
♦AK65
♣Q8763

W E
S

♠102
♥KQ962
♦Q1074
♣105

♠AK953
♥10
♦J983
♣K92

27 ♠105
♥J753
♦K7
♣87542

♠QJ83
♥A1098
♦J53
♣Q3

W E
S

♠A2
♥KQ642
♦AQ10
♣AJ9

♠K9764
♥
♦98642
♣K106

28 ♠K10
♥AKJ1076
♦7543
♣7

♠A8
♥Q3
♦KQJ1086
♣K109

W E
S

♠97543
♥952
♦A
♣J654

♠QJ62
♥84
♦92
♣AQ832

Board (25) Av: NS=-70

N-S	E-W	Contract	L	N-S	E-W	IMP
1	9	2S	N-2 D9		100	-1
9	1	2S	N-2 D9		100	-1
2	3	2S	N-1 HQ		50	1
3	2	2S	N-2 HQ		100	-1
4	8	2Sx	N-2 D9	300		-6
8	4	3H	W-2 SK	200		7
5	12	2S	N-2 HQ		100	-1
12	5	2S	N-2 HQ		100	-1
6	11	2S	S-2 HQ		100	-1
11	6	3C	E-2 DJ	200		7
7	10	2S	N-2 HQ		100	-1
10	7	2C	N-2 HQ		100	-1

Board (26) Av: NS=+650

N-S	E-W	Contract	L	N-S	E-W	IMP
1	9	5S	S 5 DK	650		0
9	1	4S	S 4 DK	620		-1
2	3	4S	S 5 DA	650		0
3	2	4S	S 5 DA	650		0
4	8	4S	N 4 H3	620		-1
8	4	5Sx	S 5 DA	850		5
5	12	4S	S 5 DA	650		0
12	5	4S	S 5 DA	650		0
6	11	4S	S 5 DA	650		0
11	6	4S	S 5 DQ	650		0
7	10	4S	N 5 HK	650		0
10	7	4S	S 5 DA	650		0

Board (27) Av: NS=-480

N-S	E-W	Contract	L	N-S	E-W	IMP
1	9	6H	E-1 D9	50		11
9	1	4H	E 6 S4		480	0
2	3	4H	E 6 D2		480	0
3	2	6NT	W 6 H7		990	-11
4	8	4H	E 5 H3		450	1
8	4	4H	E 6 D2		480	0
5	12	2Sx	S-5 D3		1100	-12
12	5	4NT	W 6 ST		490	0
6	11	6H	E-1 D2	50		11
11	6	2Sx	S-5 H9		1100	-12
7	10	6H	E-2 D2	100		11
10	7	4H	E 5 D2		450	1

Board (28) Av: NS=+100

N-S	E-W	Contract	L	N-S	E-W	IMP
1	9	3H	N 3 DA	140		1
9	1	2S	E-3 H8	150		2
2	3	4Hx	N-1 DA		200	-7
3	2	3H	N 3 DA	140		1
4	8	3D	E-1 HK	50		-2
8	4	2H	N 2 DA	110		0
5	12	3D	W-1 HA	50		-2
12	5	3D	W-1 HA	50		-2
6	11	3H	N 3 C2	140		1
11	6	2S	W-1 HA	50		-2
7	10	3H	N 3 DA	140		1
10	7	3H	N 3 DA	140		1

29 ♠975
♥J754
♦Q9
♣AJ42

♠83
♥932
♦A107543
♣97

W E
S

♠KJ62
♥10
♦J82
♣K10853

♠AQ104
♥AKQ86
♦K6
♣Q6

30 ♠A6
♥Q875
♦A874
♣Q52

♠43
♥KJ1092
♦9
♣KJ974

W E
S

♠K1097
♥A64
♦Q1052
♣103

♠QJ852
♥3
♦KJ63
♣A86

31 ♠KQ4
♥82
♦A10932
♣KQ4

♠A9
♥AK1053
♦J754
♣82

W E
S

♠8732
♥QJ74
♦6
♣A763

♠J1065
♥96
♦KQ8
♣J1095

32 ♠8
♥Q8432
♦K104
♣10986

♠KJ1095432
♥7
♦J7
♣42

W E
S

♠A7
♥AKJ10965
♦95
♣AK

♠Q6
♥
♦AQ8632
♣QJ753

Board (29) Av: NS=+650

N-S	E-W	Contract	L	N-S	E-W	IMP
1	9	4H	S 5 DA	650		0
9	1	3NT	S 3 D3	600		-2
2	3	4H	S 5 C9	650		0
3	2	3NT	S 3 D5	600		-2
4	8	4H	N 5 H3	650		0
8	4	4H	S 5 C9	650		0
5	12	4H	S 5 S8	650		0
12	5	4H	S 5 C9	650		0
6	11	4H	N 5 C2	650		0
11	6	4H	S 5 D4	650		0
7	10	4H	N 5 D8	650		0
10	7	4H	S 5 S8	650		0

Board (30) Av: NS=0

N-S	E-W	Contract	L	N-S	E-W	IMP
1	9	4H	E-4 SQ	200		5
9	1	5D	S-2 HJ		100	-3
2	3	3NT	S-1 HJ		50	-2
3	2	3D	S 3 HJ	110		3
4	8	3NT	N-1 H3		50	-2
8	4	3NTxN-2	H9		300	-7
5	12	4D	S 4 HJ	130		4
12	5	3D	S 4 C4	130		4
6	11	3H	W-2 H2	100		3
11	6	3NT	N-2 H4		100	-3
7	10	4D	S-1 HJ		50	-2
10	7	4D	S-3 H2		150	-4

Board (31) Av: NS=-50

N-S	E-W	Contract	L	N-S	E-W	IMP
1	9	4H	W-1 H2	50		3
9	1	4Hx	W-1 H8	100		4
2	3	3H	W 3 H2		140	-3
3	2	3H	W 3 H2		140	-3
4	8	4H	E-1 H3	50		3
8	4	4H	W 4 SK		420	-9
5	12	4H	W 4 SK		420	-9
12	5	4H	W-1 H9	50		3
6	11	3H	W 3 H3		140	-3
11	6	4H	W-1 H7	50		3
7	10	4H	W-1 CK	50		3
10	7	4H	W-1 H2	50		3

Board (32) Av: NS=-150

N-S	E-W	Contract	L	N-S	E-W	IMP
1	9	7S	W-1 S8	100		6
9	1	6Sx	W 6 CT		1660	-17
2	3	5Sx	W-1 DK	200		8
3	2	6Sx	W-2 H8	500		12
4	8	6Dx	N-2 H3		300	-4
8	4	5Sx	W-1 H2	200		8
5	12	6Sx	W 7 CT		1860	-17
12	5	6Cx	N-2 HA		300	-4
6	11	6Cx	N-2 H2	500		12
11	6	7Cx	N-3 CK		500	-8
7	10	5Sx	W-1 DK	200		8
10	7	5S	E-1 D4	100		6